

**BRANJENO PODRUČJE 7  
MALI SLIV ČESMA-GLOGOVNICA**

**Dionica D.7.2.**

rijeka Česma, l.o.;  
Siščani - Pavlovac;  
rkm 39+633 – 80+690  
(41,057 km)

**Nasipi:**  
Lijevi nasip Česme;  
rkm 39+633 – 73+640  
km 0+000 – 33+960  
(33,960 km)

**Mjerodavni vodomjer:**  
V - Pavlovac, rkm 79+562 (113,49)  
P = +220  
R = +250  
I = +300  
IS = +360  
M = +380 (21.1.1998.)

- |  |                   |  |            |
|--|-------------------|--|------------|
|  | USTAVA            |  | ČEP        |
|  | PRELJEV           |  | RAMPA 1    |
|  | PREGRADA          |  | RAMPA 2    |
|  | STEPENICA         |  | ČUVRNICA   |
|  | PRAG              |  | PODCENTAR  |
|  | CRPNA STANICA     |  | VODOZAHVAT |
|  | SIFON             |  | NAFTOVOD   |
|  | MOST              |  | SKELA      |
|  | PROPUST           |  | NASIP      |
|  | BRANA AKUMULACIJE |  | ZID        |
|  | OBALOUTVRDA       |  |            |
|  | VISOKA OBALA      |  |            |

- GRANICA BRANJENOG PODRUČJA  
 GRANICA SEKTORA

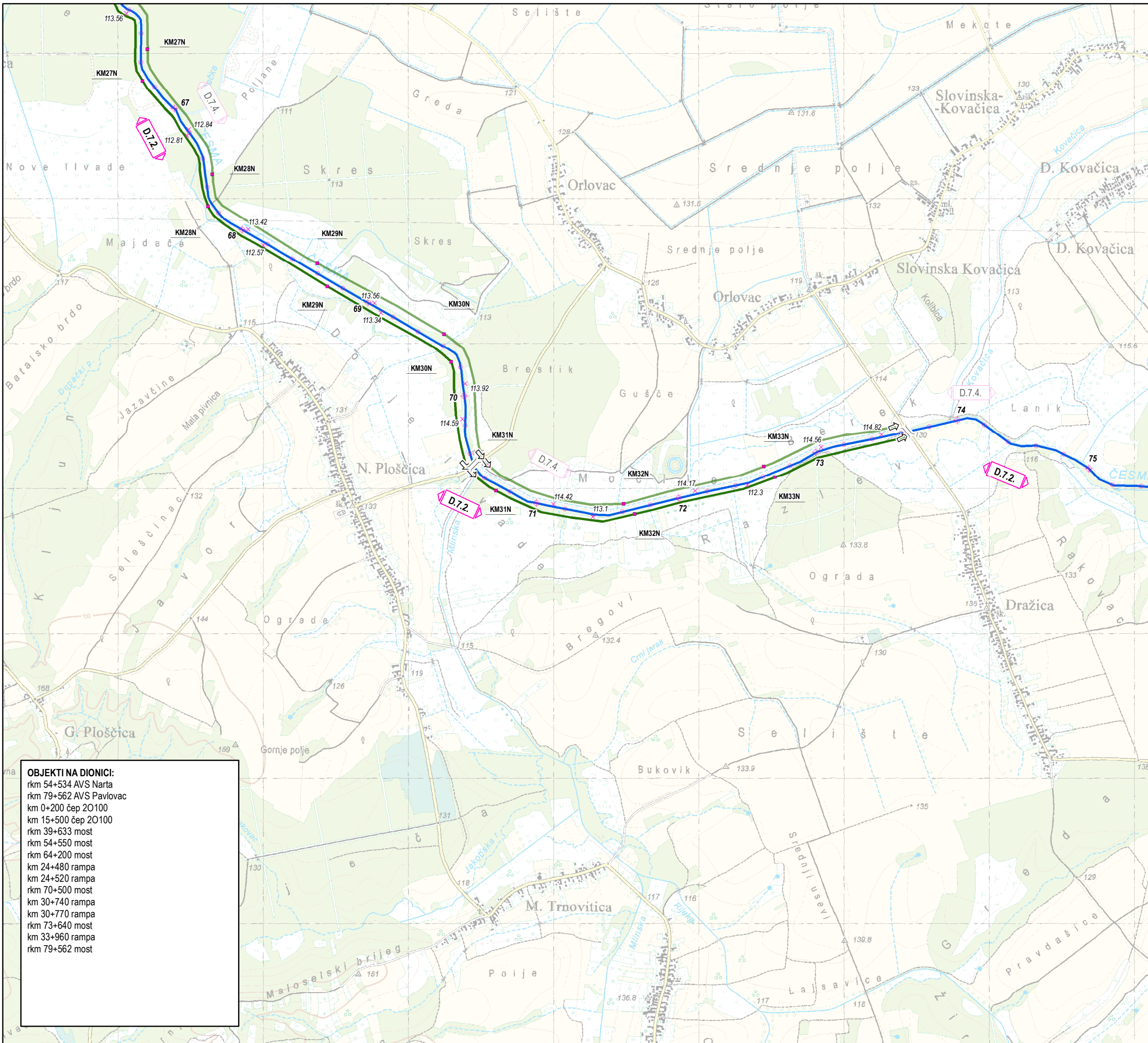
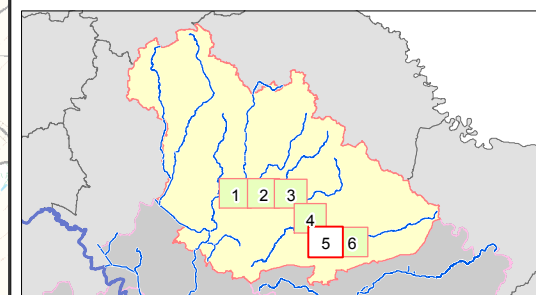
- MJESTO PROBOJA NASIPA  
 DRUGA CRTA OBRANE

- STACIONAŽA VODOTOKA  
 STACIONAŽA NASIPA  
 KOTA KRUNE NASIPA

- |                                     |                          |
|-------------------------------------|--------------------------|
| <b>MJERODAVNE POSTAJE</b>           | <b>KONTROLNE POSTAJE</b> |
|                                     |                          |
|                                     |                          |
| AVS - AUTOMATSKA VODOMJERNA POSTAJA |                          |



List 5 od 6



**OBJEKTI NA DIONICI:**

- rkm 54+534 AVS Narta
- rkm 79+562 AVS Pavlovac
- km 0+200 čep 20100
- km 15+500 čep 20100
- rkm 39+633 most
- rkm 54+550 most
- rkm 64+200 most
- km 24+480 rampa
- km 24+520 rampa
- rkm 70+500 most
- km 30+740 rampa
- km 30+770 rampa
- rkm 73+640 most
- km 33+960 rampa
- rkm 79+562 most