

**BRANJENO PODRUČJE 3
MALI SLIV ORLJAVA-LONDŽA**

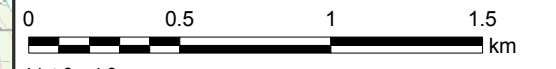
Dionica D.3.1.

rijeka Orjava, d.o.;
most Brodski Drenovac – most Kuzmica;
rkm 13+533 - 39+770
(26,237 km)

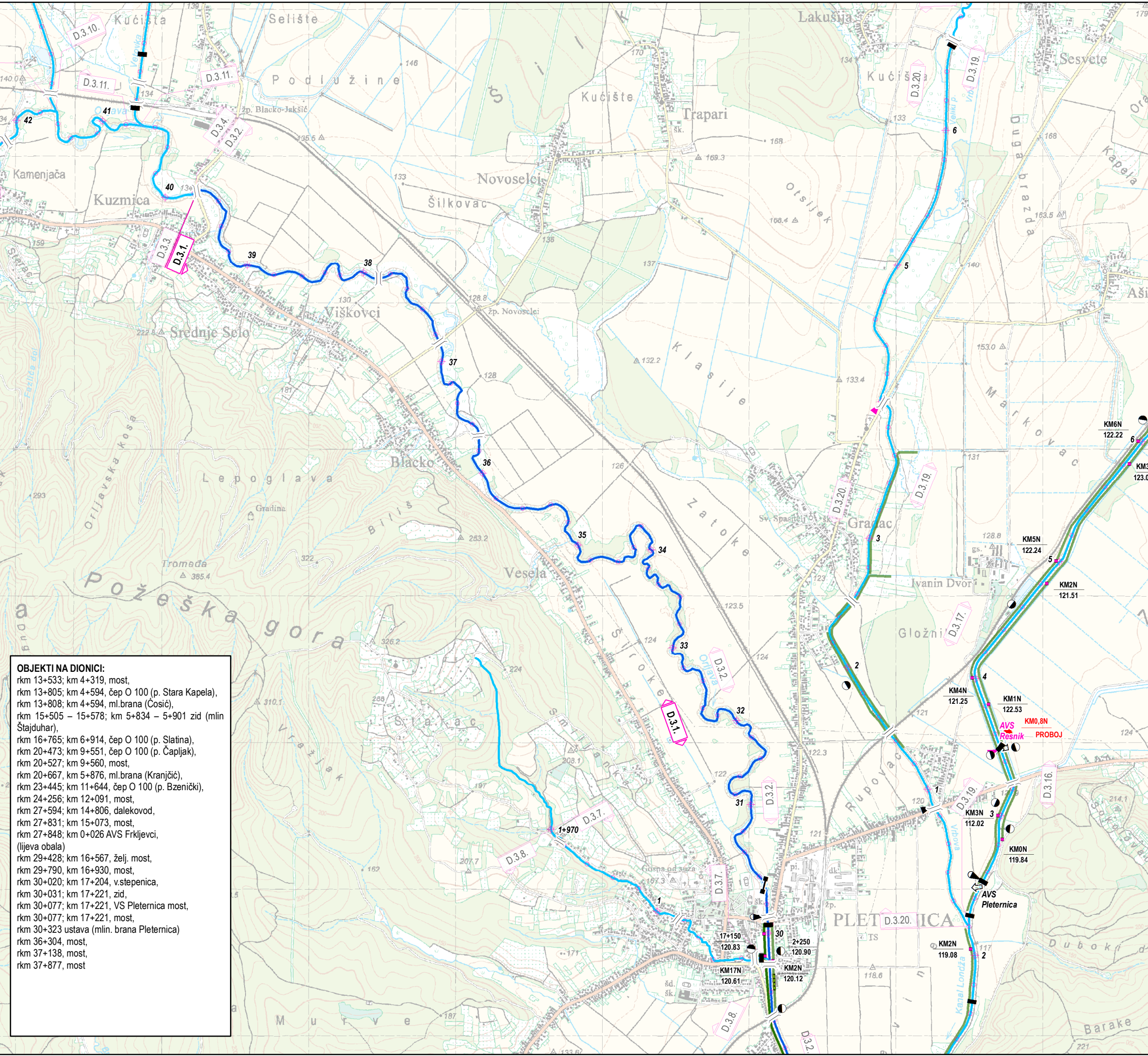
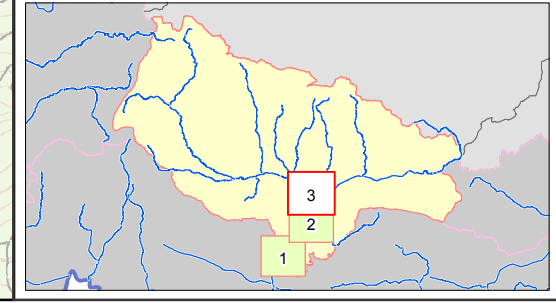
Nasipi:
Desni nasip Orljave; / rkm 13+533 - 39+770
Stac. po vodotoku: rkm 13+740 -29+973
kazeta 9: km 4+594 - 6+889 (2,295 km)
kazeta 8: km 6+915 - 9+522 (2,607 km)
kazeta 7: km 9+551 - 11+614 (2,063 km)
kazeta 6: km 11+644 - 15+073 (3,429 km)
Pleternica: km 15+200 - 17+221 (2,021 km)
(ukupno 12,415 km nasipa)

Mjerodavni vodomjer:
V - Frkljevci, rkm 27+848 (111,93)
P = +300
R = +360
I = +460
IS = +560
M = +529 (2.6.2010.)

- | | | | |
|--|-------------------------------------|--|-------------------|
| | USTAVA | | ČEP |
| | PRELJEV | | RAMPA 1 |
| | PREGRADA | | RAMPA 2 |
| | STEPENICA | | ČUVARNICA |
| | PRAG | | PODCENTAR |
| | CRPNA STANICA | | VODOZAHVAT |
| | SIFON | | NAFTOVOD |
| | MOST | | SKELA |
| | PROPUST | | NASIP |
| | BRANA AKUMULACIJE | | ZID |
| | OBALOUTVRDA | | |
| | VISOKA OBALA | | |
| | GRANICA BRANJENOG PODRUČJA | | |
| | GRANICA SEKTORA | | |
| | MJESTO PROBOJA NASIPA | | |
| | DRUGA CRTA OBRANE | | |
| | STACIONAŽA VODOTOKA | | |
| | STACIONAŽA NASIPA | | |
| | KOTA KRUNE NASIPA | | |
| | MJERODAVNE POSTAJE | | KONTROLNE POSTAJE |
| | VODOKAZ | | VODOKAZ |
| | LIMNIGRAF | | LIMNIGRAF |
| | AVS - AUTOMATSKA VODOMJERNA POSTAJA | | |



List 3 od 3



- OBJEKTI NA DIONICI:**
 rkm 13+533; km 4+319, most,
 rkm 13+805; km 4+594, čep O 100 (p. Stara Kapela),
 rkm 13+808; km 4+594, ml.brana (Čosić),
 rkm 15+505 - 15+578; km 5+834 - 5+901 zid (mlin Štajduhar),
 rkm 16+765; km 6+914, čep O 100 (p. Slatina),
 rkm 20+473; km 9+551, čep O 100 (p. Čapljak),
 rkm 20+527; km 9+560, most,
 rkm 20+667; km 5+876, ml.brana (Kranjčić),
 rkm 23+445; km 11+644, čep O 100 (p. Bzenički),
 rkm 24+256; km 12+091, most,
 rkm 27+594; km 14+806, dalekovod,
 rkm 27+831; km 15+073, most,
 rkm 27+848; km 0+026 AVS Frkljevci, (lijeva obala)
 rkm 29+428; km 16+567, želj. most,
 rkm 29+790, km 16+930, most,
 rkm 30+020; km 17+204, v.stepenica,
 rkm 30+031; km 17+221, zid,
 rkm 30+077; km 17+221, VS Pleternica most,
 rkm 30+077; km 17+221, most,
 rkm 30+323 ustava (mlin. brana Pleternica)
 rkm 36+304, most,
 rkm 37+138, most,
 rkm 37+877, most