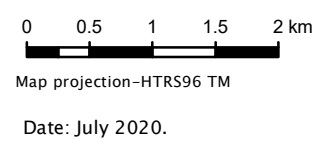


### Legend

- WL gauges
- Affected buildings
- Rivers
- Flood Zone extent (AFP)



DATA SOURCE:  
Hrvatske vode  
Državna geodetska uprava  
Other Institutions



Contractor:  
Computer Classroom KU217 Limited,  
Ground Floor 8-9, Marino Mart Fairview Clontarf Dublin 3,  
D03 P590 Dublin, Irska

## FEM PARAMETERS – RIVER SAVA

### AFPO5

100-year return period

#### HYDROLOGICAL PARAMETERS

- Design flows  $Q_{100} = 4613 \text{ [m}^3/\text{s]}$   
 $Q_{\text{bankfull}} = 2877 \text{ [m}^3/\text{s]}$

- Peak reduction

$\Delta Q \text{ [m}^3/\text{s]}$	$\Delta Q_{\text{rel}} \text{ [%]}$	FEM Class
143.04	8.24	5

- Flood wave translation

$\Delta t \text{ [h]}$	FEM Class
22.00	5

#### HYDRAULIC PARAMETERS

- Water level

$\Delta h \text{ [m]}$	FEM Class
1.00	5

- Flow velocity

$\Delta v \text{ [m/s]}$	FEM Class
0.05	1

- Shear stress

$\Delta \tau \text{ [N/m}^2]$	FEM Class
0.27	1

#### ECOLOGICAL PARAMETERS

- Connectivity of floodplain water bodies

Historic Water Bodies	FEM Class
4 - FP Exist, Disconnected $Q=4097\text{m}^3/\text{s} > Q_{\text{bankfull}}$	1

- Existence of protected species and habitats

Protected species	FEM Class
82 species	5

Protected habitats	FEM Class
100% habitats	5

- Ecological water status

Status	No	FEM Class
Status 1 - Very poor	0	5
Status 2 - Poor	0	
Status 3 - Moderate	0	
Status 4 - Good	0	
Status 5 - Very Good	S	

*Note:*  
S = Sava  
(main watercourse)

#### HYDRAULIC PARAMETERS

- Land use

Value	FEM Class
3.96	3

- Potentially affected buildings

No houses / km <sup>2</sup>	FEM Class
2.24	3

**Need for preservation:** YES

**RESTORATION PRIORITY:** Low