



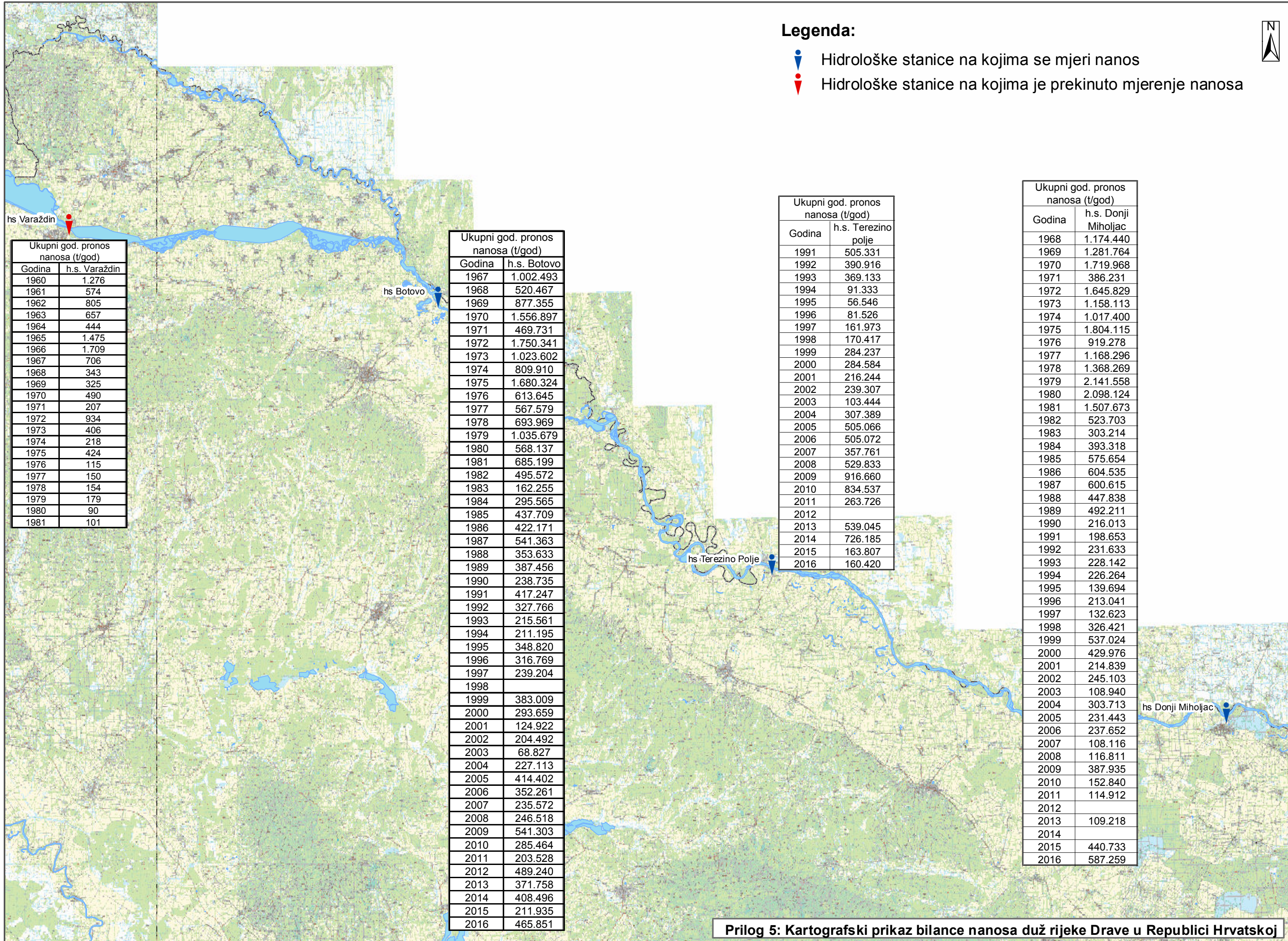
Legenda:



Hidrološke stanice na kojima se mjeri nanos



Hidrološke stanice na kojima je prekinuto mjerenje nanosa



Ukupni god. pronos nanosa (t/god)	
Godina	h.s. Varaždin
1960	1.276
1961	574
1962	805
1963	657
1964	444
1965	1.475
1966	1.709
1967	706
1968	343
1969	325
1970	490
1971	207
1972	934
1973	406
1974	218
1975	424
1976	115
1977	150
1978	154
1979	179
1980	90
1981	101

Ukupni god. pronos nanosa (t/god)	
Godina	h.s. Botovo
1967	1.002.493
1968	520.467
1969	877.355
1970	1.556.897
1971	469.731
1972	1.750.341
1973	1.023.602
1974	809.910
1975	1.680.324
1976	613.645
1977	567.579
1978	693.969
1979	1.035.679
1980	568.137
1981	685.199
1982	495.572
1983	162.255
1984	295.565
1985	437.709
1986	422.171
1987	541.363
1988	353.633
1989	387.456
1990	238.735
1991	417.247
1992	327.766
1993	215.561
1994	211.195
1995	348.820
1996	316.769
1997	239.204
1998	
1999	383.009
2000	293.659
2001	124.922
2002	204.492
2003	68.827
2004	227.113
2005	414.402
2006	352.261
2007	235.572
2008	246.518
2009	541.303
2010	285.464
2011	203.528
2012	489.240
2013	371.758
2014	408.496
2015	211.935
2016	465.851

Ukupni god. pronos nanosa (t/god)	
Godina	h.s. Terezino polje
1991	505.331
1992	390.916
1993	369.133
1994	91.333
1995	56.546
1996	81.526
1997	161.973
1998	170.417
1999	284.237
2000	284.584
2001	216.244
2002	239.307
2003	103.444
2004	307.389
2005	505.066
2006	505.072
2007	357.761
2008	529.833
2009	916.660
2010	834.537
2011	263.726
2012	
2013	539.045
2014	726.185
2015	163.807
2016	160.420

Ukupni god. pronos nanosa (t/god)	
Godina	h.s. Donji Miholjac
1968	1.174.440
1969	1.281.764
1970	1.719.968
1971	386.231
1972	1.645.829
1973	1.158.113
1974	1.017.400
1975	1.804.115
1976	919.278
1977	1.168.296
1978	1.368.269
1979	2.141.558
1980	2.098.124
1981	1.507.673
1982	523.703
1983	303.214
1984	393.318
1985	575.654
1986	604.535
1987	600.615
1988	447.838
1989	492.211
1990	216.013
1991	198.653
1992	231.633
1993	228.142
1994	226.264
1995	139.694
1996	213.041
1997	132.623
1998	326.421
1999	537.024
2000	429.976
2001	214.839
2002	245.103
2003	108.940
2004	303.713
2005	231.443
2006	237.652
2007	108.116
2008	116.811
2009	387.935
2010	152.840
2011	114.912
2012	
2013	109.218
2014	
2015	440.733
2016	587.259

Prilog 5: Kartografski prikaz bilance nanosa duž rijeke Drave u Republici Hrvatskoj